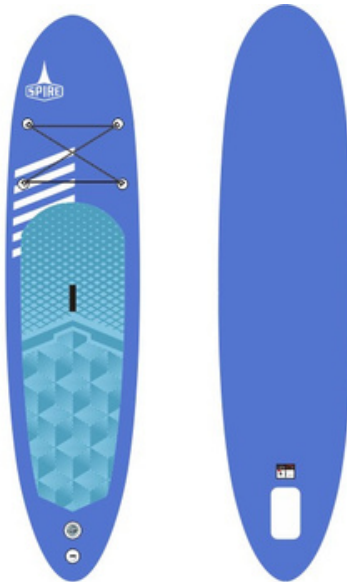




**INFLATABLE
STAND UP
PADDLE BOARD**



HEAVY DUTY BACKPACK STORAGE BAG

High Capacity bag. All Spire Mojo goods can be loaded in - easy to transport and carry.

PUMP WITH GAUGE

Manual pump to inflate the Inflatable SUP to 15 PSI

REPAIR KIT

In case of any punctures or rips, our repair kit comes with patches and a valve tool.

FIN

Use the removable fin for increased tracking while paddling.

LEASH

The use of the leash is to ensure safety.

3 PIECE PADDLE

3 piece adjustable aluminum paddle

PADDLE



Figure 1.

SUP PADDLE: Your 3-Piece paddle easily connects together and is fully height adjustable. The ergonomic grip should be handled as illustrated (Figure 1).

i If the connection at the lock of the propeller rod is loose, please rotate the lock several times and tighten it(Figure 2).

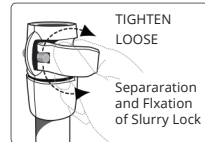
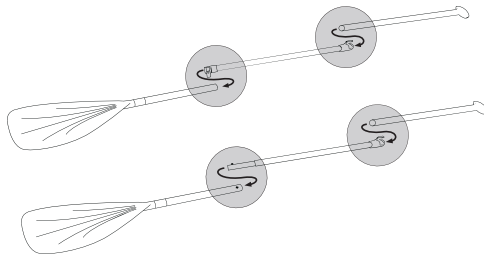


Figure 2.



FIN TYPE:

Slide Fin

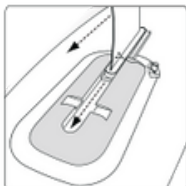


Figure 1.

Slide the fin into the fin box. Make sure fin and card slot of fin box in the same position.

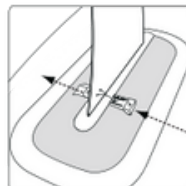
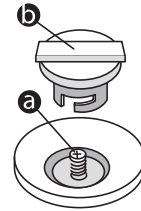


Figure 2.

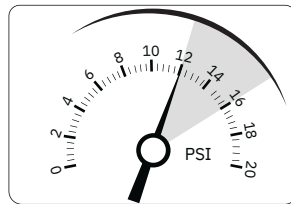
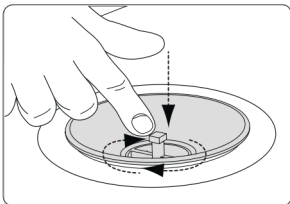
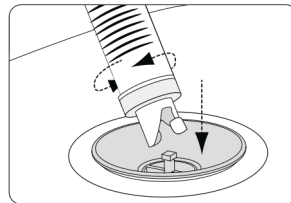
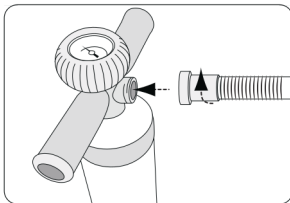
Insert the gasket into the slot to ensure that the gasket can catch the fin.

OPERATION OF VALVES

In order to inflate easily, remove the valve cover(b) - turning clockwise, Put it(a)in “Output” position. After inflating,screw in valve cover(b) anticlockwise.



- ② Unpack and unroll your SUP on a smooth, clean, flat surface. Connect the air tap on your pump to the inflation valve on your SUP.
- ③ Firmly push the air tap inwards and twist clockwise to secure the connection.
- ④ Before you begin to pump, please consult the recommended PSI on the valve(s) of your SUP and inflate to the appropriate value.
- ⑤ DO NOT over-inflate your SUP. The PSI may not register on your pump until you reach at least 7 PSI - keep pumping!
- ⑥ Once the desired air pressure has been reached, please safely disconnect the air tap of your pump and secure the valve on your SUP.



INFLATION TIPS AND PRECAUTIONS

- Ⓢ The board can be inflated either with our hand pump or an electric pump.
The electric pump can inflate the board to a moderate pressure and save a lot of time with about 90% of the required air volume.
You will need to use your hand pump to inflate the chambers to the correct pressure.
- Ⓢ **Do not use an air compressor.**
Damage to your board caused by over inflation from an air compressor is not covered by your
Ⓢ warranty.
After 2 or 3 days there may be a small decrease of pressure due to temperature change.
- Ⓢ If so, add a few pumps of air.
Before undertaking a long paddle, inflate the board for a full 24 hours to be sure the board is airtight. If you are seeing a consistent decrease in air pressure, follow the instructions for leak
Ⓢ detection in the board repair section of this manual.
Do not over-inflate the board. A max pressure of 15 PSI is adequate. The easiest gauge of a
Ⓢ good working pressure is to have the chambers inflated to a firm pressure when you press on them.
Do not pump to a high pressure and let the board sit out in the sun. If the board is going to be in a warm environment, slightly under-inflate the board and allow the heat from the sun to increase the internal pressure.
When paddling, the colder temperature of the water may cause a slight loss in chamber pressure.

BOARD CARE AND STORAGE

- Ⓢ Before storing, hose off the board and let it dry completely to prevent mildew buildup.
- Ⓢ Do not use harsh chemicals for cleaning. Most dirt can be removed with a mild soap and fresh water.
- Ⓢ You may store the board inflated or deflated. if you deflate the board, we recommend that you store it in the protective bag that came with the board
- Ⓢ We do not recommend hanging the board.
- Ⓢ Do not store in extreme conditions (i.e. above 150F or below -10F)
- Ⓢ Store in a clean, dry place.

SAFETY & CARE

For your own safety please attach the coiled leash provided to your calf or ankle at all times. Secure one end to the D-ring at the rear of the board and securely attach the velcro strap to your calf or ankle.

Whilst paddling please consider appropriate clothing for the weather or climate. It is highly recommended to wear a buoyancy aid vest or other personal flotation device, and a wetsuit in cooler conditions.

Your board can expand and over-inflate in very hot temperatures. Please check the air pressure and deflate your board as necessary.

A repair kit is provided, with extra patches and a valve tightening tool. From time-to-time your valve may need tightening to prevent any air leaks. To tighten the valve first ensure that the board is fully deflated. Insert the tool into the valve and push upwards from the underside of the board to ensure that the valve is making firm contact with the thread. Next, turn the tool clockwise until the valve is fully tightened and secure.

Please ensure that no water gets inside of your SUP as this can severely damage the board. Drain any water and dry thoroughly before re-attaching the valve and inflating.

WARRANTY

IDEAL SOURCES provides a limited 6 Months Warranty from date of purchase.



WWW.IDEALSOURCES.COM.AU

Contact us at www.idealsources.com.au/contact



@ideal.sources

You can download the E-manual at our website.

Imported by:
Ideal Sources Pty Ltd
3/310-312 Governor Road
Braeside Victoria Australia 3195