



SALTWATER SYSTEM PUMP #8231

(Product Code: 56612)



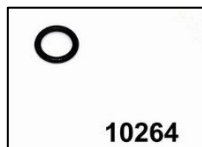
#10460
Air Release Valve
PLU# 32929



#10725
Air Release Valve B
PLU# 37437



#11251
Flow Sensor Conduit
PLU# 37568



#10264
Air Release Valve
PLU# 32930



#10494
3M Pump Hose with Nuts
PLU# 29162



#10717
O-Ring C
PLU# 37378



#10491
Threaded Filter Housing
Collar
PLU# 37312



#10726
Water Transfer Hose
PLU# 29354



#10724
Angle Joint
PLU# 37436



#10490
Filter Housing Cover
PLU# 32914



#10712
O-Ring A
PLU# 37315

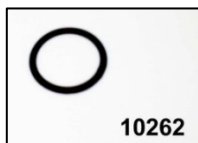


#10743
O-Ring D
PLU# 3748

SALTWATER SYSTEM PUMP #8231 cont.



#10747
Plunger Valve
PLU# 29201



#10262
Hose O-Ring
PLU# 32934



#10745
Step Washer
PLU# 32935



#10256
Strainer Nut
PLU# 32936



#10255
Flat Strainer Rubber Washer
PLU# 32937



#11074
Adjustable Pool Inlet Nozzle
PLU# 32939



#10722
Adaptor B
PLU# 32940



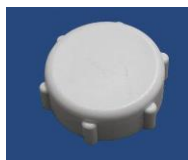
#11070
Strainer Connector
PLU# 29208



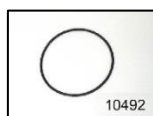
#11071
Pool Inlet Nozzle
PLU# 29209



#11072
Strainer Grid
PLU# 30042



#11131
Electrolytic Cell Cover
PLU# 37554



#10492
Filter Housing O-Ring
PLU# 32915



#11143
Flow Sensor
PLU# 29356



#10886
Electrolytic Cell
(with Titanium Plates)
PLU# 37522

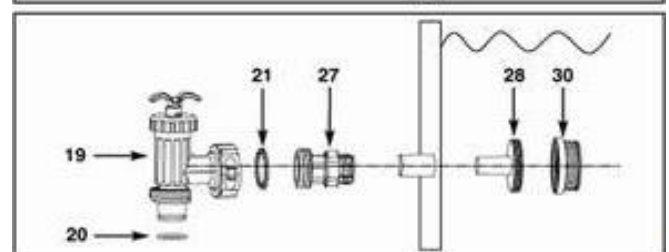
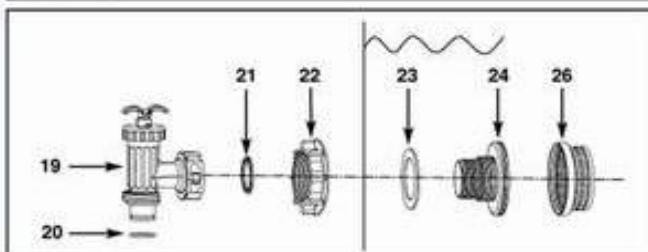
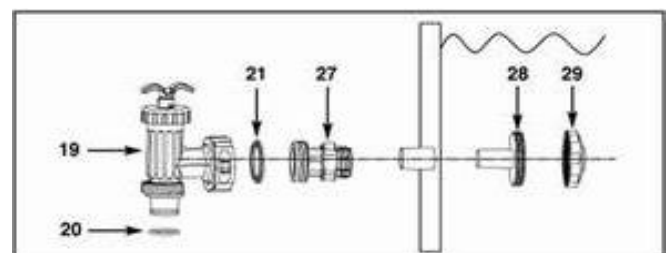
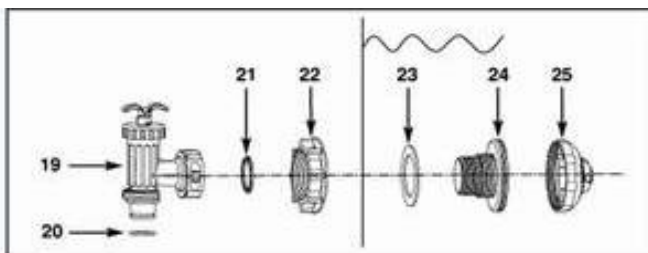
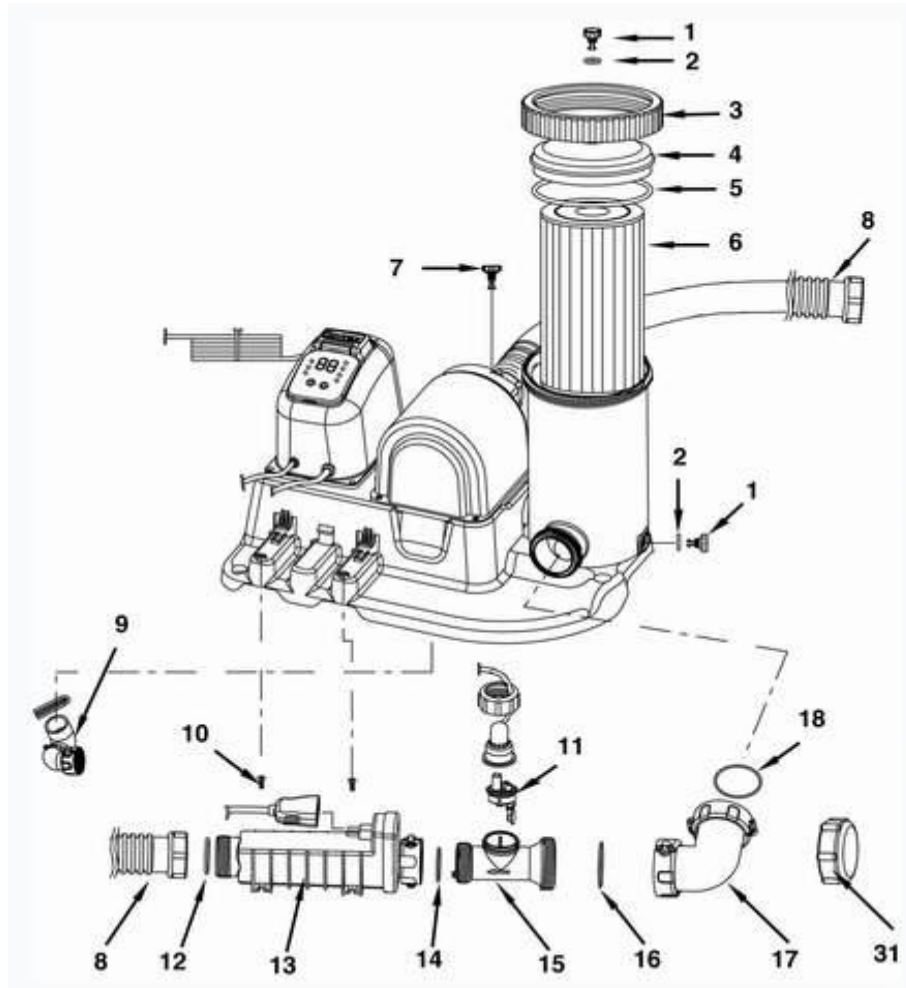


#10253
Strainer Grid
29207



#10744
Threaded Strainer Connector
PLU# 37494

SALTWATER SYSTEM PUMP #8231 cont.



SALTWATER SYSTEM PUMP #8231 cont.

REF NO.	PLU	SPARE PART NO.	DESCRIPTION	QTY
1	32929	10460	AIR RELEASE VALVE / SEDIMENT RELEASE VALVE	2
2	32930	10264	AIR RELEASE VALVE O-RING	2
3	37312	10491	THREADED FILTER HOUSING COLLAR	1
4	32914	10490	FILTER HOUSING COVER	1
5	32915	10492	FILTER HOUSING O-RING	1
7	37437	10725	AIR RELEASE VALVE B (WITH O-RING)	1
8	29162	10494	3M X 1-1/2" PUMP HOSE WITH NUTS (WITH GREY COLOR)	2
9	29354	10726	WATER TRANSFER HOSE(WITH COLLAR AND 2 HOSE CLAMPS)	1
10	37334	10713	SCREW (USE WITH ELECTROLYTIC CELL)	2
11	29356	11143	FLOW SENSOR	1
12	37315	10712	O-RING A	1
13	37522	10886	ELECTROLYTIC CELL (WITH TITANIUM PLATES)	1
14	37335	10715	O-RING B (PRE-INSTALLED IN 05CG-06/05CG-09)	1
15	37568	11251	FLOW SENSOR CONDUIT	1
16	37378	10717	O-RING C (PRE-INSTALLED IN 05CG-06)	1
17	37436	10724	ANGLE JOINT	1
18	37483	10743	O-RING D	1
19	29201	10747	PLUNGER VALVE	2
20	32934	10262	HOSE O-RING	2
21	32935	10745	STEP WASHER	2
22	32936	10256	STRAINER NUT	2
23	32937	10255	FLAT STRAINER RUBBER WASHER	2
24	37494	10744	THREADED STRAINER CONNECTOR	2
25	32939	11074	ADJUSTABLE POOL INLET NOZZLE	1
26	29207	10253	STRAINER GRID	1
27	32940	10722	ADAPTOR B	2
28	29208	11070	STRAINER CONNECTOR FOR 1-1/4" FITTING	2
29	29209	11071	POOL INLET NOZZLE	1
30	30042	11072	STRAINER GRID	1
31	37554	11131	ELECTROLYTIC CELL COVER	1