

148A

148A

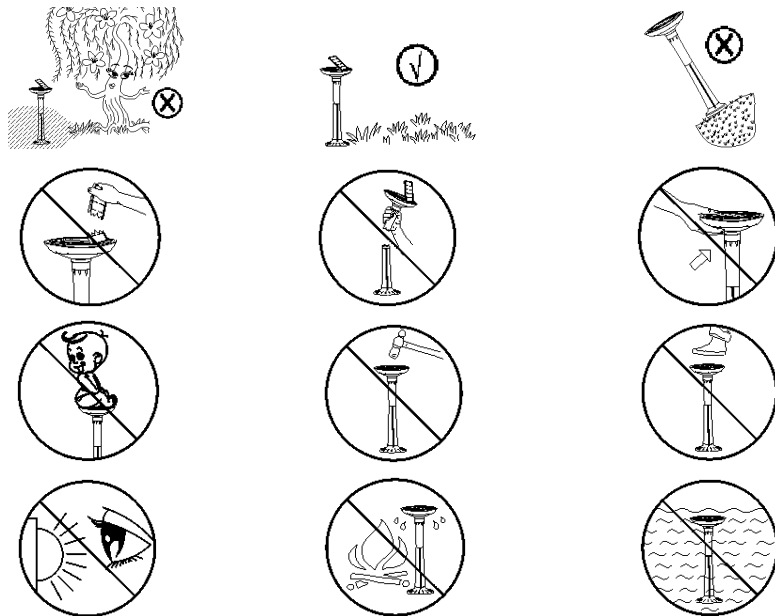
INTEX® OWNER'S MANUAL

SOLAR LED LANDSCAPE LIGHT MODEL SL1006

⚠ WARNING

- This product is not a toy, keep away from children. Assembly and disassembly by adult only.
- Do not dispose of batteries in regular trash, municipal waste stream or by fire as battery may leak or explode.
- Do not stare directly at the light emitted by this product.
- Never lift or handle the product by the solar panel. Do not touch the solar panel surface.
- Do not set up the product on slope, incline surface or shaded areas.
- Do not sit, straddle, step or exert pressure on the product as injury could occur.

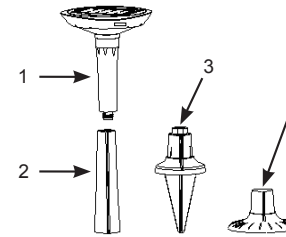
FOLLOW THESE RULES AND ALL INSTRUCTIONS TO AVOID PROPERTY DAMAGE OR OTHER INJURY.



Due to a policy of continuous product improvement, Intex reserves the right to change specifications and appearance, which may result in updates to the instruction manual, without notice.

SAVE THESE INSTRUCTIONS

PARTS LIST



REF. NO.	DESCRIPTION	QTY.	SPARE PARTS NO.
1	SOLAR LIGHT	1	11929
2	LOWER TUBE	1	11256
3	STAKE	1	11257
4	BASE	1	11258

INSTRUCTIONS

General

- The solar panel will charge the battery during daytime and the light will turn on automatically when it gets dark. It will also turn off when it gets bright again.
- The adjustable solar panel allows maximum sunlight exposure.
- Depending on weather conditions and sun exposure, a full day charge under the sunlight provides an average of 3-5 hours of illumination.
- For better performance, the product should be installed in a bright sunny area and not in shaded areas, under the trees or areas with low sunlight exposure.
- Keep the solar panel surface clean and clear from leaves or debris that may affect its efficiency.

IMPORTANT

- Do not setup this product near other sources of lighting devices.

To Install or Replace the Built-in Rechargeable Battery:

1. Remove the screws with a phillips screwdriver (not included) and lift the cover. Insert the rechargeable battery (type: 18650; 3.7v, 2000Mah) following the orientation shown on the battery housing (see Fig 1).
2. Make sure the cover o-ring is in place and replace the battery cover back.

Note: Always purchase the correct size and grade of battery most suitable for the intended use. Clean the battery contacts and also those of the device prior to battery installation.



FIG (1)

SAVE THESE INSTRUCTIONS

Installation:

The product comes with two separate fixing accessories:

- A stake for anchoring the product into the lawn or garden yard.
- A pedestal base with fixation holes for wooden platform, terrace or cement floor.

1. Screw the lower tube (2) to the solar light unit. Turn the switch on to activate the solar panel control system. See fig (2).

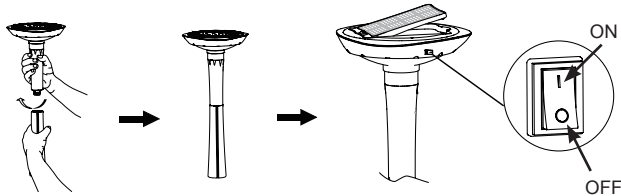


FIG (2)

2. Insert the stake (3) into the lawn or garden where desired, ensure the stake is firmly anchored; insert the assembled light device into the stake. See fig (3).

NOTE: If the ground is hard and packed, moisten the ground with water before inserting the stake.

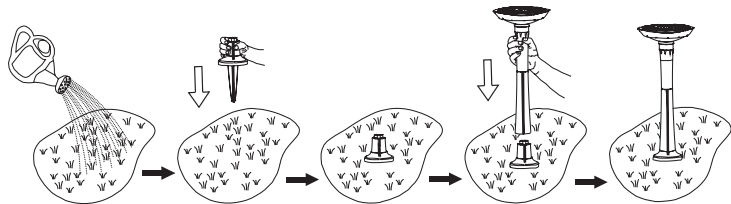


FIG (3)

3. The solar light also can be mounted on a wooden platform or cement floor using the pedestal base. See fig (4).

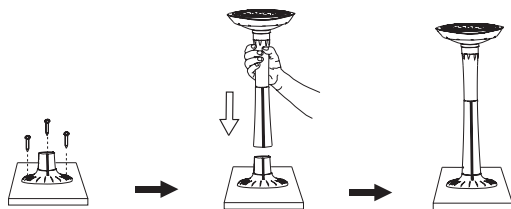


FIG (4)

SAVE THESE INSTRUCTIONS

**Installation (continued):
Adjusting the solar panel**

In different regions and depending on the season, the solar panel needs to be adjusted to allow maximum sun light exposure for better performance. See below chart.

AREA	SPRING	SUMMER	AUTUMN	WINTER
<p>Latitude 50° and above</p>				
<p>Latitude 30° ~ 50°</p>				
<p>Latitude 10° ~ 30°</p>				
<p>Latitude 0° ~ 10°</p>				

IMPORTANT

- To allow maximum sun exposure, northern hemisphere users should position the product with the solar panel facing south. Southern hemisphere users should position the product with the solar panel facing north.

AREA	ADJUSTING THE SOLAR PANEL
<p>Northern hemisphere</p>	
<p>Southern hemisphere</p>	

SAVE THESE INSTRUCTIONS

LIMITED WARRANTY

Your Solar LED landscape light has been manufactured using the highest quality materials and workmanship. All Intex products have been inspected and found free of defects prior to leaving the factory. This Limited Warranty applies only to the Solar LED landscape light. The following provision is only valid within the European member states countries: The legal regulation of Directive 1999/44/EC will not be effected by this Intex warranty.

The provisions of this Limited Warranty apply only to the original purchaser and is not transferable. This Limited Warranty is valid for a period of one (1) year from the date of the initial retail purchase. Keep your original sales receipt with this manual, as proof of purchase will be required and must accompany warranty claims or the Limited Warranty is invalid.

If a manufacturing defect is found within this one (1) year period, please contact the appropriate Intex Service Center listed in the separate "Authorized Service Centers" sheet. The Service Center will determine the validity of the claim.

IMPLIED WARRANTIES ARE LIMITED TO THE TERMS OF THIS WARRANTY AND IN NO EVENT SHALL INTEX, THEIR AUTHORIZED AGENTS OR EMPLOYEES BE LIABLE TO THE BUYER OR ANY OTHER PARTY FOR DIRECT OR CONSEQUENTIAL DAMAGES OR LIABILITIES. Some countries, or jurisdictions do not allow the exclusion or limitation of incidental or consequential damages, so the above limitation or exclusion may not apply to you.

This Limited Warranty does not apply if the Solar LED landscape light is subject to negligence, abnormal use or operation, accident, improper operation, improper voltage or current contrary to operating instructions, or to damage by circumstances beyond Intex's control, including but not limited to, ordinary wear and tear and damage caused by exposure to fire, flood, freezing, rain, or other external environmental forces. This Limited Warranty applies only to those parts and components sold by Intex. The Limited Warranty does not cover unauthorized alterations, repairs or disassembly by anyone other than Intex Service Center personnel.

Injury or damage to any property or person is not covered by this warranty.

SAVE THESE INSTRUCTIONS