

INTEX® OWNER'S MANUAL

Rechargeable Multifunction LED Light 1 Watt Model CL1111

READ AND FOLLOW ALL INSTRUCTIONS BEFORE USING THIS PRODUCT

⚠ WARNING

- Adult use only. This product is not a toy, keep away from children.
- Do not stare directly at the light emitted by this product.
- Do not dispose of product in regular trash, municipal waste stream or by fire as the built-in rechargeable battery may leak or explode.
- This product is resistant to rain and splashing water, but it is not submersible. Do not drop into or immerse in water.

General Information

- This product is powered by an internal built-in rechargeable battery.
- Always purchase the correct size and grade of battery most suitable for the intended use.
- Clean the battery contacts and also those of the device prior to battery installation.
- Ensure batteries are installed correctly with regard to polarity (+ and -).
- The LED is a lifetime light source. It will never need to be replaced.
- The operating time for this product depends on whether it is run continuously or intermittently. Intermittent use extends the battery operating time.
- To clean the product, use only a damp cloth. Avoid strong cleaner, excessive water and abrasive brush.

Due to a policy of continuous product improvement, Intex reserves the right to change specifications and appearance, which may result in updates to the instruction manual, without notice.

SAVE THESE INSTRUCTIONS

Parts list

1. 12V DC power adaptor
2. USB cable

Built-in battery indicator level and charging receptacles

The built-in battery indicator light and the charging input receptacles are located on the left side under the rubber flap.

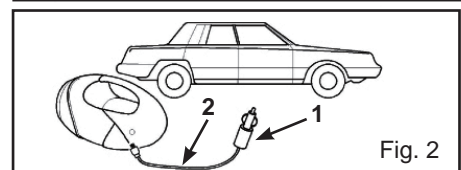
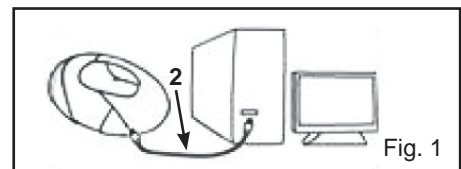
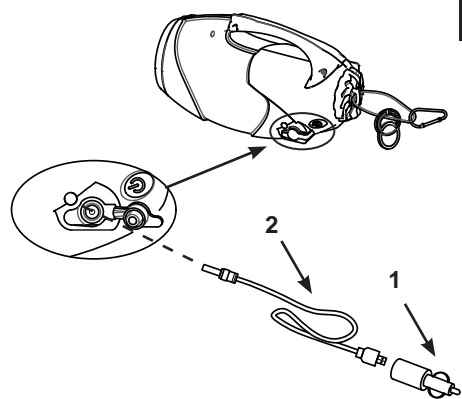
When the device is switched on and operating from the built-in battery it automatically detects the built-in battery level as follow:

- If the indicator light is flashing red the battery is about 40% level or less, and requires charging.
- If the indicator light is off the battery level is about 40% level or above.

Charging methods

The built-in battery indicator light will turn red when is in charging mode, and green when is fully charged from either:

- A computer through the **USB cable**. It takes 5 to 6 hours to fully charge the battery (See Fig. 1)
- A vehicle 12V DC receptacle through the **12V DC power adaptor with the USB cable**. It takes 2 to 3 hours to fully charge the battery (See Fig. 2)



SAVE THESE INSTRUCTIONS

Functions and Operation

To Install or Replace the Built-in Rechargeable Battery:

- Remove the screws with a phillips screwdriver (not included) and lift the cover (See Fig 3)
- Insert the rechargeable battery (type: 18650; 3.7v, 2000Mah) following the orientation shown on the battery housing (see Fig 4).
- Make sure the cover o-ring is in place and replace the battery cover back (see Fig 5).

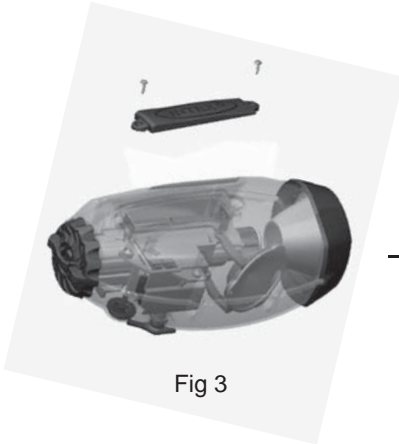


Fig 3

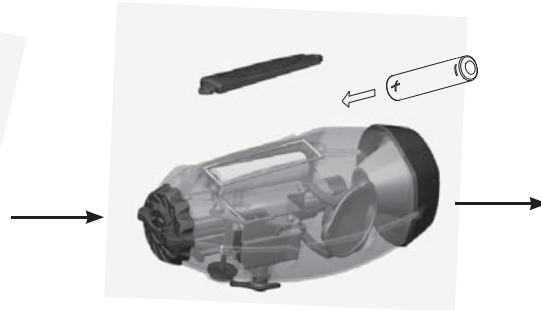


Fig 4

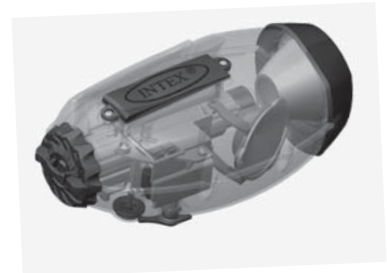


Fig 5

SAVE THESE INSTRUCTIONS

Functions and Operation (Continued)

- ON/OFF push button: Sets light brightness in lantern and flashlight mode (see Fig 6):

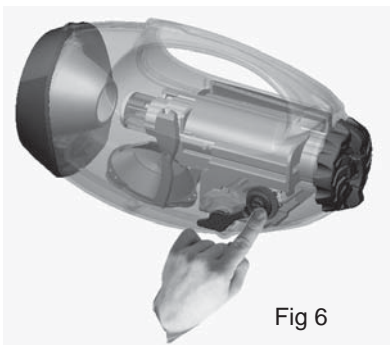


Fig 6

Press Button	Brightness/Function	Percent	Battery Life
Once	Low	8%	* 35 hours
Twice	Medium	50%	* 8 hours
Three times	High	100%	* 3 hour
Four times	SOS, Emergency beacon international SOS signal light	100%	
Five times	Flashing hazard light	100%	
Six times	Off		

* Based on a fully charged internal battery.

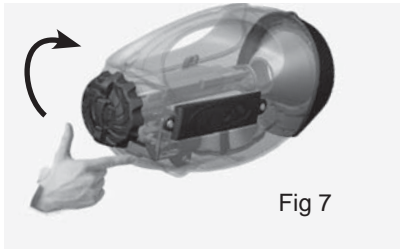
- The brightness of the flashing hazard light and emergency beacon light are defaulted to full power (100%) and cannot be adjusted.
- When the light is on, press and hold the button for 3 seconds to turn off the light.
- When the light is off, press and hold the button for 3 seconds, you can switch the light to SOS function directly.

SAVE THESE INSTRUCTIONS

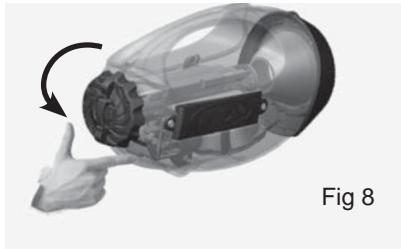
Functions and Operation (Continued)170
IO

• Turn-knob: adjust between lantern and flashlight use:

- Turn clockwise to convert light into 360 degree lantern; can be hung or placed on the table (See Fig. 7).



- Turn counterclockwise to convert light to a flashlight/torch. Amount of turn adjusts the spotlight beam-angle and focus distance. Hanging light in flashlight mode produces a downward spotlight effect (See Fig. 8).

**SAVE THESE INSTRUCTIONS**

Page 5

Limited Warranty170
IO

Your RECHARGEABLE MULTIFUNCTION LED LIGHT has been manufactured using the highest quality materials and workmanship. All Intex products have been inspected and found free of defects prior to leaving the factory. This Limited Warranty applies only to the RECHARGEABLE MULTIFUNCTION LED LIGHT .

The following provision is only valid within the European member states countries: The legal regulation of Directive 1999/44/EC will not be effected by this Intex warranty.

The provisions of this Limited Warranty apply only to the original purchaser and is not transferable. This Limited Warranty is valid for a period of one (1) year from the date of the initial retail purchase. Keep your original sales receipt with this manual, as proof of purchase will be required and must accompany warranty claims or the Limited Warranty is invalid.

If a manufacturing defect is found within this one (1) year period, please contact the appropriate Intex Service Center listed in the separate "Authorized Service Centers" sheet. The Service Center will determine the validity of the claim.

IMPLIED WARRANTIES ARE LIMITED TO THE TERMS OF THIS WARRANTY AND IN NO EVENT SHALL INTEX, THEIR AUTHORIZED AGENTS OR EMPLOYEES BE LIABLE TO THE BUYER OR ANY OTHER PARTY FOR DIRECT OR CONSEQUENTIAL DAMAGES OR LIABILITIES. Some countries, or jurisdictions do not allow the exclusion or limitation of incidental or consequential damages, so the above limitation or exclusion may not apply to you.

This Limited Warranty does not apply if the RECHARGEABLE MULTIFUNCTION LED LIGHT is subject to negligence, abnormal use or operation, accident, improper operation, improper voltage or current contrary to operating instructions, or to damage by circumstances beyond Intex's control, including but not limited to, ordinary wear and tear and damage caused by exposure to fire, flood, freezing, rain, or other external environmental forces. This Limited Warranty applies only to those parts and components sold by Intex. The Limited Warranty does not cover unauthorized alterations, repairs or disassembly by anyone other than Intex Service Center personnel.

Injury or damage to any property or person is not covered by this warranty.

SAVE THESE INSTRUCTIONS

Page 6